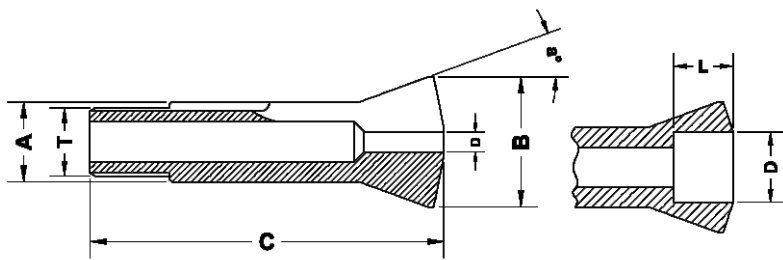


# B - Type Collet



## B - TYPE COLLETS

All Dimension are in mm - Unless Otherwise Specified

Part Nr.	Guiding Dia ØA	Major Dia ØB	Total length C	Thread T	Angle a°	Length L	Capacity
							D Min - Max ØD
SB6/128	6	10.5	31.3	Ø5x36f" <) 55°	20°	-	1.00...3.00
						12	3.01...4.50
						4.5	4.51...5.00
						4	5.01...5.50
						3.5	5.51...6.00
SB8/137	8	13	35.5	Ø6.82x0.625 <) 55°	20°	-	1.00...4.00
						12.5	4.01...6.50
						6	6.51...7.00
						5	7.01...7.50
						4	7.51...8.00
						3.2	8.01...8.50
						2.5	8.51...9.00
						1.7	9.01...9.50
1	9.51...10.00						
SB15/139	15	21	55	M13 x 1	20°	-	1.00...9.50
						20	9.51...12.50
						8.5	12.51...13.00
						7.7	13.01...13.50
						7	13.51...14.00
						6.5	14.01...14.50
6	14.51...15.00						
SB32/55	32	40	102	M30 x 1.5	15°	-	1.00...24.00
						44	24.01...28.00
						12	28.01...30.00
SB32/65	32	40	106	Ø29.7x15f" <) 45°/5°	15°	-	1.00...24.00
						44	24.01...28.00
SB32/65	32	40	106	Ø29.7x15f" <) 45°/5°	15°	12	28.01...30.00
						8	30.01...32.00
SB45/199	45	53	115	M42 x 1.5	15°	-	1.00...36.00
						53	36.01...40.99
						14	41.00...41.99
						12	42.00...42.99
						10	43.00...43.99
8	44.00...45.00						